



# Domain Time II

## Time Synchronization Software Suite

*Precise Time Synchronization for the Entire Enterprise*

### KEY FEATURES

- Comprehensive Time Client, Server & Management Software for Precise Time Synchronization Across the Network
- Install, Update, Configure, Monitor, and Troubleshoot All Time Clients From a Single Workstation.
- Adaptable Time Hierarchy Automatically Adjusts to Changes in the Network Assuring Clients Access to the Correct Time
- Detailed Event Logging for Time Auditing Purposes

### KEY BENEFITS

- Precisely Time Synchronize Mission Critical Network Operations and Applications
- Monitor Network Synchronization and Be Alerted When Synchronization is Outside Your Specifications
- Hold Network Time Accuracy Within Specified Limits
- Ensure Accurate Time on All Network Clients
- Reduce or Eliminate Costs Involved in Installing and Managing Time Synchronization Across a Network
- Manage Time Synchronization on Both Large and Small Networks Just as Easily
- Improve Network Log File Accuracy to Speed Network Diagnosis and Forensics

Accurate network time synchronization is critical for network log file accuracy, billing systems, electronic transactions, database integrity, software development, and many more essential applications in today's corporate enterprise. Symmetricom's Domain Time™ II software in combination with a GPS referenced network time server delivers the only comprehensive network time synchronization solution available today.

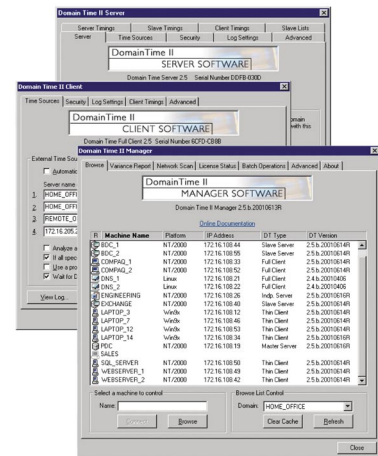
Domain Time II is a comprehensive software solution that simplifies time synchronization across the network. Versatile time clients and software servers keep the network hierarchy synchronized to a GPS referenced network time server. Easy to use management tools simplify and automate many tasks related to keeping these clients up-to-date. Monitoring functions track the synchronization across the network and notify you of any problems. The result is a reliable time synchronization system that requires little management overhead and offers tremendous value to the integrity of network operations and applications.

Domain Time II's management tools enable complete control of your entire network time hierarchy from a single workstation. You can install, update, configure, monitor time synchronization and troubleshoot, and track Domain Time II components enterprise-wide. This eliminates the costs involved in manually installing and maintaining time software on large numbers of machines distributed across the network.

Precise delivery of time is made possible through high-precision time protocols, time-source averaging, clock training, slewing, target seeking, and an efficient time cascade update hierarchy. On large networks the software servers automatically take over for each other when one becomes unavailable, and clients automatically find alternate servers if there's a failure. Time components can also be set manually for multiple levels of fallback time sources.

Domain Time II tracks multiple types of data that verify exactly who synchronized from whom, when, and what the actual adjustments were.

There is also built-in protection against malicious or inadvertent tampering with the time on your network – with a combination of active and passive defenses.



Domain Time II Software Suite for Network Timing

## Domain Time II Specifications

### DOMAIN TIME II CLIENTS

- Full Client: The Full Client lets you specify time sources, proxies, protocols, and clock accuracy settings. It runs as a background service which eliminates the need to set the time using a batch command or requiring the logged-in user to have time change rights on NT/2000 machines. Any desired custom parameter can be set manually using its Control Panel applet, or the client can be set for fully automatic operation.
- Thin Client: The Thin Client is a completely automatic time client. It is approximately half the size of the Full Client and has no configuration options. It is optimized for a small footprint and extremely low system overhead.
- DTSET command-line client: DTSET is a multi-protocol time client that can be run manually, from an icon, or in a batch file. Choose this client when you only want to synchronize time manually or in scripts.

### DOMAIN TIME II SERVER

- The Domain Time II Server is a background service that obtains the correct time from a trusted time source, such as a GPS referenced network time server, and then immediately maintains the correct time on all machines on the network. Domain Time II Server supports multiple time protocols for the highest compatibility with all time sources and clients.

### DOMAIN TIME II MANAGEMENT TOOLS

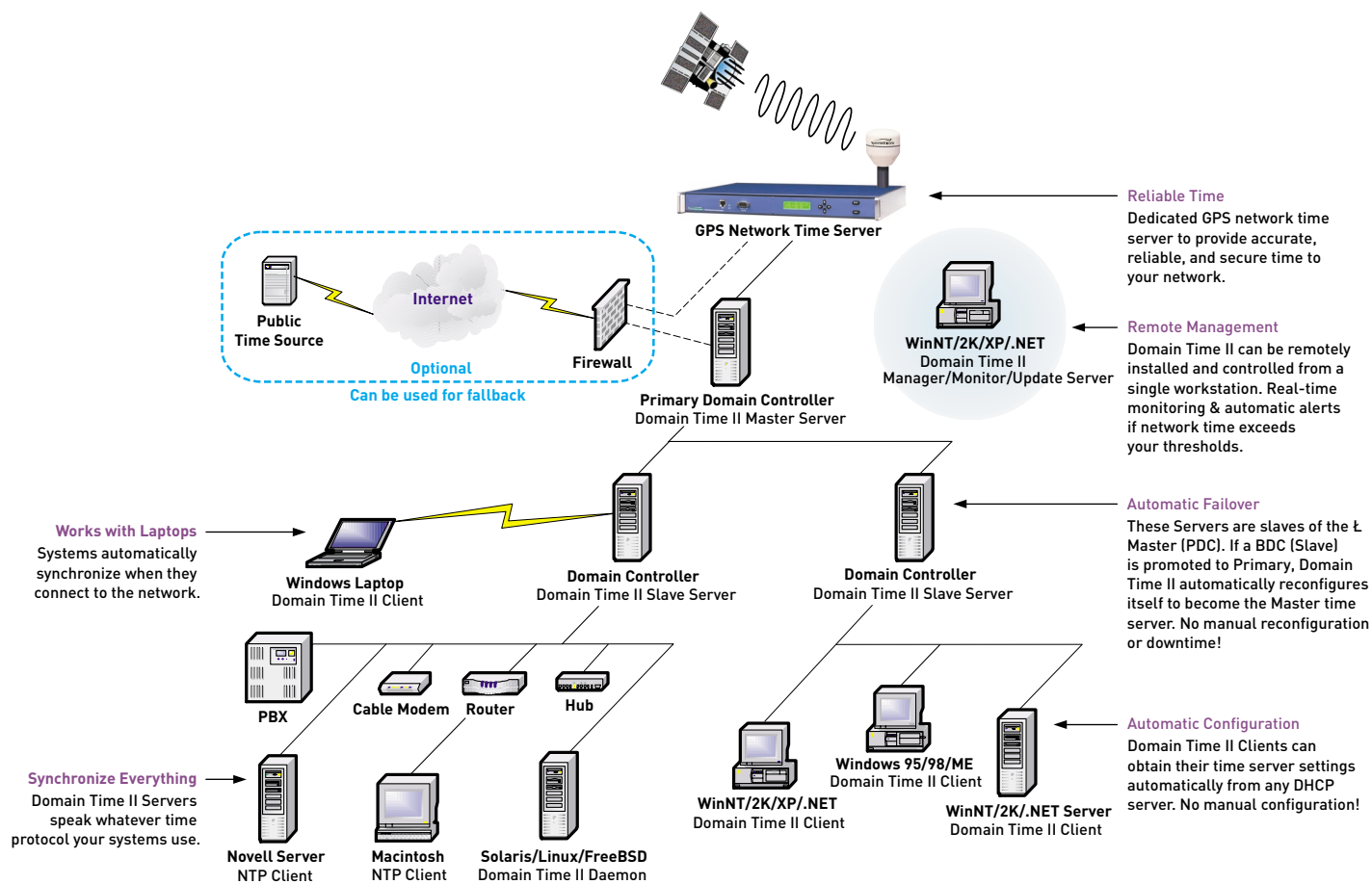
- Domain Time II Manager remotely installs or updates Domain Time components from a central workstation. It also provides software license information, time variance reports, and remote configuration of Domain Time II components. The monitor function tracks the status of your clocks system-wide and sends alerts if any monitored system is out of sync. The many automated/background features save a great deal of time in managing the installation and monitoring of the time clients.

### DOCUMENTATION

- All documentation is online at <http://dtdocs.ntp-systems.com>

### SYSTEM REQUIREMENTS

- Clients: (Full, Thin, and DTSET Command-line) Windows 95/98/ME/NT/2K/XP/2003 (NT on Alpha or Intel). Clients also available for Solaris 7/8, FreeBSD, Linux (Intel x86 Architecture with RedHat/Mandrake, SuSE, TurboLinux, Debian/Stormix).
- Server: Windows NT (Intel or Alpha) and 2K/XP/2003 (Intel only).
- Management tools: Windows NT (Intel or Alpha) and 2K/XP/2003 (Intel only).
- Product includes: Starter kit which includes one (1) Manager license, one (1) Server license, and 20 Client licenses. Additional licenses are available.



**SYMMETRICOM, INC.**  
**TT&M DIVISION**  
 3750 Westwind Boulevard  
 Santa Rosa, California  
 95403  
 tel: 707.528.1230  
 fax: 707.527.6640  
[ntp-systems@symmetricom.com](mailto:ntp-systems@symmetricom.com)  
[www.ntp-systems.com](http://www.ntp-systems.com)

**SYMMETRICOM, INC.**  
**CORPORATE**  
 2300 Orchard Parkway  
 San Jose, California  
 95131-1017  
 tel: 408.433.0910  
 fax: 408.428.7896  
[info@symmetricom.com](mailto:info@symmetricom.com)  
[www.symmetricom.com](http://www.symmetricom.com)